

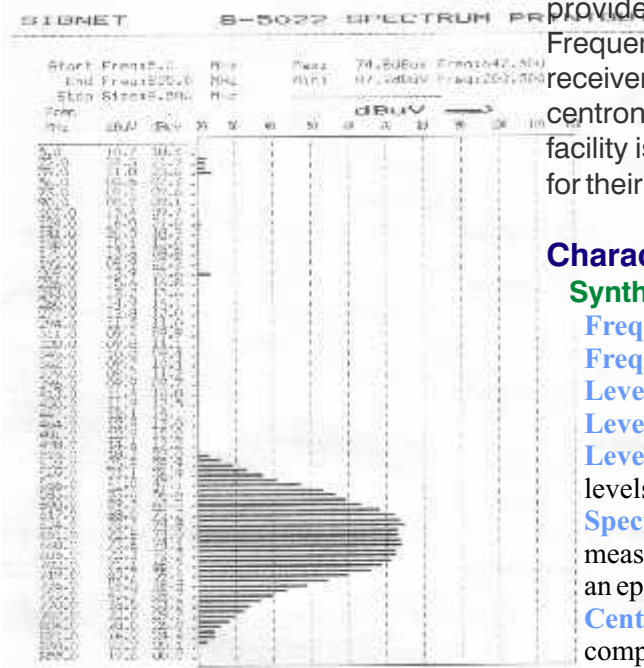
S-5022A SPECTRUM/NETWORK ANALYZER

50-1300 MHz



S-5022A Spectrum/Network Analyzer offers measurement capabilities specially suited for Educational Applications. Swept Synthesized Software measurements offer greater accuracy of frequency as well as amplitude compared to conventional low cost Spectrum Analyzers. Spectrum hardcopy is available via centronics interface and PC connectivity is via RS232 serial port. **SI-3024A** Spectrum/Network (Scalar) Analysis third party software greatly enhances the scope of usage and Experimentation in the Lab.

HardCopy PrintOut



S-5022A Synthesized Spectrum Analyzer with RF Tracking Generator offers dual functions in one equipment. The RF source and the Spectrum Analyzer in combination provide NETWORK Analysis capability over the full Frequency Range using suitable third party software. The receiver also has a CENTRONICS output for connection to a centronics LX-800 printer for direct Spectrum Printout. This facility is very useful to students who get a hardcopy printout for their journals.

Characteristics

Synthesized Spectrum Input

Freq Range: 50-1300 MHz freq range, synthesized

Freq/Level Resolution: 125KHz & 0.1dB resolution

Level Range: 100dB measurement range.

Level Accuracy: 1.5dB typ accy into 50ohms

Level Array: 100 points array is provided for storing the dBuV levels measured at 100 freqs.

Spectrum Hardcopy: At the press of a button Spectrum measurements are made from 50-1300 MHz and printed out on an Epson Lx800 compatible printer.

Centronics Interface: To be connected to an Epson Lx800 compatible printer for obtaining a spectrum Hardcopy.

Synthesized RF Tracking Generator

Frequency Range: 50-1300 MHz

Output Amplitude: 110 dBuV typ measured at 300 KHz bandwidth.

RS232 Interface

Provided for PC connectivity and control of the Spectrum Analyzer.

General

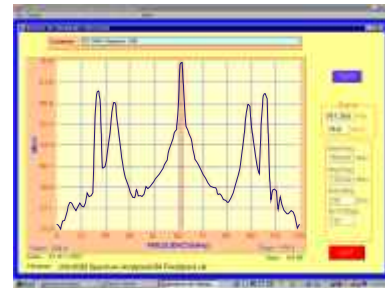
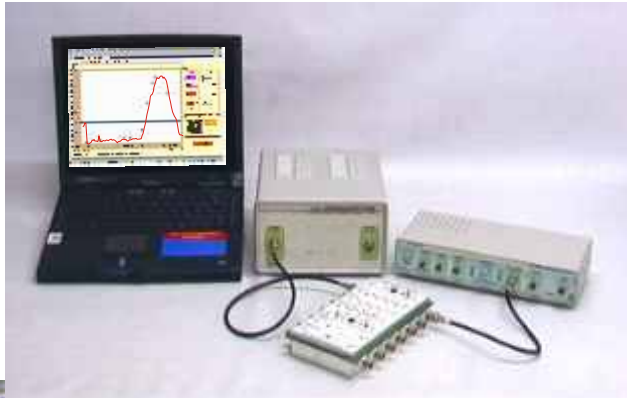
Mains: 230V AC \pm 10% 50Hz



201/202, Champak Ind Est.
105, Sion (E) Mumbai 400022
Tel: 24011079, 32509190
Fax: 9122 24070266
www.signet-instruments.com
Email: signet_instruments@yahoo.com

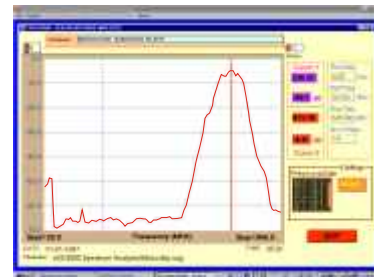
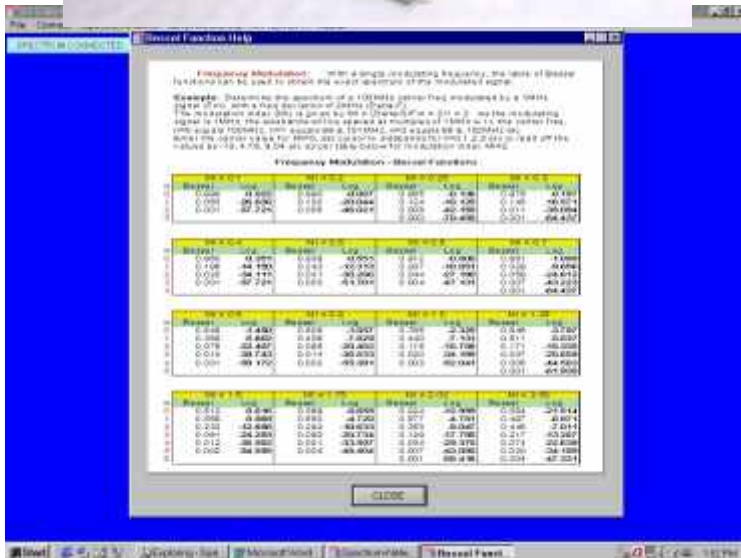
Remarks: All accuracies if specified are at 25deg C ambient, 230V mains, 50Hz with instrument grounded - after warmup of 30 min. Numerical values without tolerance specs are typical only and not subject to any tolerance interpretations. Specifications, Illustrations and price change

SI-3024A Spectrum/Network (Scalar) Analysis Software



SPECTRUM Analyzer Mode

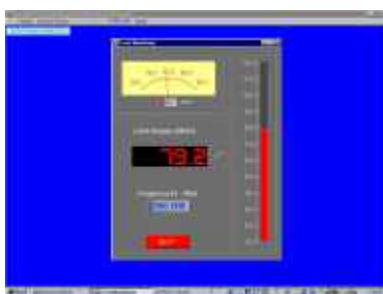
User can set the Start/Stop frequency, step size and no. of steps for the Spectrum measurement. Cursor yields measurement of Freq and dBuV. Above shows the Spectrum of TV Signal CH58 showing Carrier with Chroma & Aural Sidebands



NETWORK (Scalar) Analyzer

This mode is very useful for testing Passive/Active devices for Loss or Gain. The Cursors directly indicate the loss/gain at the selected frequency. This is very cumbersome using a conventional Spectrum Analyzer

MICROSTRIP FILTER
Microstrip Filter shown left was tested using the Network Analyzer Mode. It shows an insertion Loss of 4.9dB at 608MHz.



METER/DIGITAL/BAR Mode

At User selected Frequency the dBuV is indicated as Digital readout and Analogue Meter/Bar. Amplitude Stability or Fine Adjustments are Monitored with ease using the Meter or Bar as compared to a Digital readout of a parameter



HARMONIC Mode

In this mode the user can enter the Fundamental freq, select the Harmonic No (max 50th). All measurements are displayed in Bar Graph. Cursor indicates the Harmonic No and Percentage. Above shows the Harmonic content of a 10MHz Square Wave upto the 50th harmonic

SIGNET INSTRUMENTS

Distributors of Electronic Test & Measuring Instruments & Software Manufacturers

4, Krishna Kunj, Ground Floor, Raghavji Road, Gowalia Tank, Mumbai 400 036